

TECHNICAL DATA



Go GREEN



BE SAFE



Description

Equi-Tile safety tiles are manufactured for the comfort and safety of your livestock and provide an environmentally friendly alternative to traditional equestrian flooring materials that is comfortable underfoot while providing slip resistance either wet or dry.

Uses

Equi-Tile safety tiles are ideally suited to improve the beauty, comfort and ease of maintenance in your barn, wash racks, breezeways or trailers.



Advantages

- **Equi-Tile** safety tiles are IPEMA Certified to ASTM F1292 for head impact attenuation at fall heights of 2 feet.
- **Equi-Tile** safety tiles are ADA compliant and meet ASTM and SPSC requirements.
- **Equi-Tile** safety tiles are water permeable providing a fast drying surface that easily permits surface water to properly drain.
- **Equi-Tile** safety tiles are environmentally friendly, molded from 100% California recycled waste tires diverting as many as 2.5 tires per tile from our landfills.
- **Equi-Tile** safety tiles are safe containing no toxic materials and certified to be 100% steel free.
- **Equi-Tile** safety tiles are have a very smooth top surface providing comfort under foot while maintaining exceptional skid resistance whether wet or dry.
- **Equi-Tile** safety tile 1" thickness combined with the paver bottom density provides excellent cushioning for your livestock without allowing permanent indentations to form in the tiles.

Advantages (Continued)

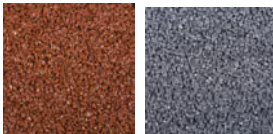
- **Equi-Tile** safety tiles are modular in design making them easy to install over the largest selection of sub-grades including concrete, asphalt, wood decking and compacted gravel.
- **Equi-Tile** safety tiles can be installed using EMC's unique Connector Pin System that creates a finished installation that will not readily shift or slide but still allows the flooring system to be moved when needed.
- **Equi-Tile** safety tiles are easy to maintain requiring only basic cleaning with a broom, vacuum or water hose on a regular basis.
- **Equi-Tile** safety tiles come in a variety of colors providing a multitude of design options to meet any need.
- **Equi-Tile** safety tiles are backed by the industries leading manufacturer of rubber molded safety tiles and accessories and come with a 5 Year Limited Material Warranty.

Standard Colors



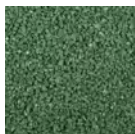
Black

Blue



Red

Gray



Green

Product Specification

Tile Size:	24" x 24" ± 1/8"
Tile Thickness:	1"
Tile Weight:	16.75lb

Physical Properties

Characteristic	Test	Result
Flame Spread:	ASTM E108	Class A
Flammability:	ASTM E648	Class II
Flammability:	ASTM 2859	Pass
Toxicity:	ASTM 2075	Lead Free
Slip Resistance:	ASTM F1677	Dry 0.63, Wet .052
Skid Resistance:	ASTM E303	Dry 96, Wet 47
Tensile Strength:	ASTM D412	1175.3 psi
Wear Resistance:	ASTM D3884	1.64% Loss/3000c
UV Resistances:	QPanel QUV	<3.0/4032 ksqm